

CCL15 Antibody (C-term)
Affinity Purified Rabbit Polyclonal Antibody (Pab)
Catalog # AP14217b**Specification**

CCL15 Antibody (C-term) - Product Information

Application	IHC-P, WB,E
Primary Accession	Q16663
Other Accession	NP_116741.1
Reactivity	Human
Host	Rabbit
Clonality	Polyclonal
Isotype	Rabbit IgG
Calculated MW	12236
Antigen Region	71-100

CCL15 Antibody (C-term) - Additional Information**Gene ID** 6359**Other Names**

C-C motif chemokine 15, Chemokine CC-2, HCC-2, Leukotactin-1, LKN-1, MIP-1 delta, Macrophage inflammatory protein 5, MIP-5, Mrp-2b, NCC-3, Small-inducible cytokine A15, CCL15(22-92), CCL15(25-92), CCL15(29-92), CCL15, MIP5, NCC3, SCYA15

Target/Specificity

This CCL15 antibody is generated from rabbits immunized with a KLH conjugated synthetic peptide between 71-100 amino acids from the C-terminal region of human CCL15.

Dilution

IHC-P~~1:10~50

WB~~1:1000

E~~Use at an assay dependent concentration.

Format

Purified polyclonal antibody supplied in PBS with 0.09% (W/V) sodium azide. This antibody is purified through a protein A column, followed by peptide affinity purification.

Storage

Maintain refrigerated at 2-8°C for up to 2 weeks. For long term storage store at -20°C in small aliquots to prevent freeze-thaw cycles.

Precautions

CCL15 Antibody (C-term) is for research use only and not for use in diagnostic or therapeutic procedures.

CCL15 Antibody (C-term) - Protein Information

Name CCL15

Synonyms MIP5, NCC3, SCYA15

Function Chemotactic factor that attracts T-cells and monocytes, but not neutrophils, eosinophils, or B-cells. Acts mainly via CC chemokine receptor CCR1. Also binds to CCR3. CCL15(22-92), CCL15(25-92) and CCL15(29-92) are more potent chemoattractants than the CCL15.

Cellular Location

Secreted.

Tissue Location

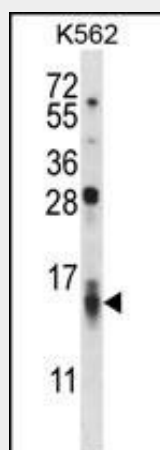
Most abundant in heart, skeletal muscle and adrenal gland. Lower levels in placenta, liver, pancreas and bone marrow CCL15(22-92), CCL15(25-92) and CCL15(29-92) are found in high levels in synovial fluids from rheumatoid patients.

CCL15 Antibody (C-term) - Protocols

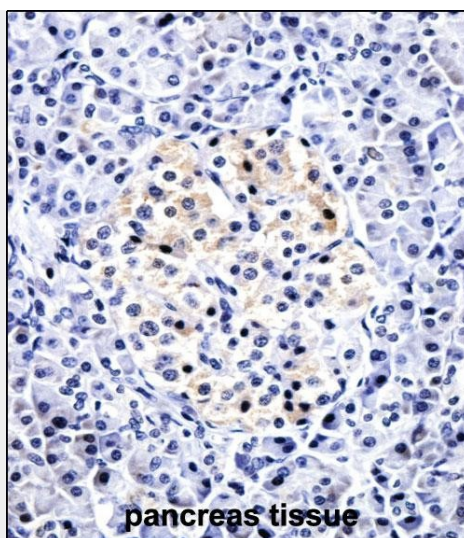
Provided below are standard protocols that you may find useful for product applications.

- [Western Blot](#)
- [Blocking Peptides](#)
- [Dot Blot](#)
- [Immunohistochemistry](#)
- [Immunofluorescence](#)
- [Immunoprecipitation](#)
- [Flow Cytometry](#)
- [Cell Culture](#)

CCL15 Antibody (C-term) - Images



CCL15 Antibody (C-term) (Cat. #AP14217b) western blot analysis in K562 cell line lysates (35ug/lane). This demonstrates the CCL15 antibody detected the CCL15 protein (arrow).



CCL15 Antibody (C-term) (AP14217b) immunohistochemistry analysis in formalin fixed and paraffin embedded human pancreas tissue followed by peroxidase conjugation of the secondary antibody and DAB staining. This data demonstrates the use of CCL15 Antibody (C-term) for immunohistochemistry. Clinical relevance has not been evaluated.

CCL15 Antibody (C-term) - Background

This gene, chemokine (C-C motif) ligand 15, is one of several CC cytokine genes clustered on 17q11.2. The CC cytokines are secreted proteins characterized by two adjacent cysteines. The cytokine encoded by this gene is chemotactic for T cells and monocytes and induces N-acetyl-beta-D-glucosaminidase release in monocytes. It induces changes in intracellular calcium concentration in monocytes and is thought to act through the CCR1 receptor. Read-through transcripts are expressed that include exons from the downstream cytokine gene, chemokine (C-C motif) ligand 14, and are represented as GeneID: 348249.

CCL15 Antibody (C-term) - References

Kitamura, T., et al. Proc. Natl. Acad. Sci. U.S.A. 107(29):13063-13068(2010)
Cho, J.E., et al. Mol. Cells 29(1):35-39(2010)
Kwon, S.H., et al. Nutr Res Pract 2(2):134-137(2008)
Zhang, Z., et al. Protein Sci. 13(10):2819-2824(2004)
Escher, S.E., et al. J. Pept. Res. 63(1):36-47(2004)